

Chapter 3

Share Level Security

Execution:

```
[root@centsmb samba]# cat smb.conf | grep security
    security = user

# Use the realm option only with security = ads
# Use password server option only with security = server
or if you can't
;    security = domain
;    security = user

[root@centsmb samba]#
```

vim /etc/samba/smb.conf and change: security = share

```
#===== Share Definitions
=====
```

```
[homes]
```

```
comment = Home Directories
```

```
browseable = yes
```

```
writable = yes
```

```
; valid users = %S
```

```
; valid users = MYDOMAIN%S
```

```
[printers]
```

```
comment = All Printers
```

```
path = /var/spool/samba
```

```
browseable = no
```

```
guest ok = no
```

```
writable = no
```

```
printable = yes
```

A publicly accessible directory, but read only, except for people in the "root" group

```
[public]
```

```
comment = Public Root
```

```
path = /home/samba
```

```
public = yes
writable = yes
printable = no
write list = +root
```

```
[root@centsmb samba]# service smb restart
```

```
Shutting down SMB services: [ OK ]
```

```
Starting SMB services: [ OK ]
```

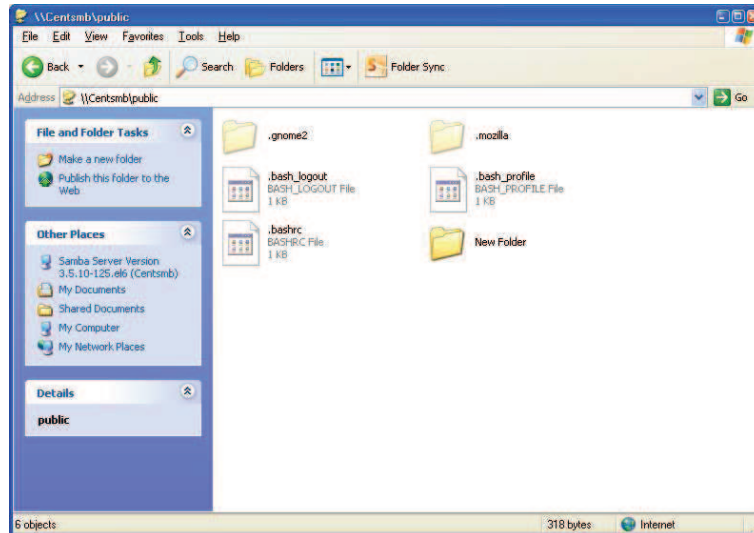
```
vim smb.conf
```

```
# A publicly accessible directory, but read only, except  
for people in
```

```
# the "staff" group
```

```
[public]
comment = Public Stuff
path = /home/hossein
public = yes
browseable = yes
writable = yes
printable = no
write list = +guest
```

guest ok = yes



```
[root@centsmb samba]# smbclient -L centsmb
```

Enter root's password:

```
Domain=[WORKGROUP] OS=[Unix] Server=[Samba  
3.5.10-125.el6]
```

Sharename	Type	Comment
homes	Disk	Home Directories
public	Disk	Public Stuff

IPC\$ IPC IPC Service (Samba Server
Version 3.5.10-125.el6)

192.168.70.177\RAJA:39 Printer
\192.168.70.177\RAJA

192.168.70.99\hp_LaserJet_1320_PCL_6:53
Printer \\192.168.70.99\hp LaserJet 1320 PCL 6

Adobe_PDF:38 Printer Adobe PDF

Auto_Adobe_PDF_on_RAJA:37 Printer Auto
Adobe PDF on RAJA

Auto_Adobe_PDF_on_RAJA:36 Printer Auto

.
. .

hp_LaserJet_1320_PCL_5e:4 Printer hp LaserJet
1320 PCL 5e

Microsoft_XPS_Document_Writer:2 Printer
Microsoft XPS Document Writer

PDF-XChange_Printer_2012:3 Printer PDF-
XChange Printer 2012

Send_To_OneNote_2010:1 Printer Send To
OneNote 2010

Snagit_9:46 Printer Snagit 9

```
Domain=[WORKGROUP] OS=[Unix] Server=[Samba  
3.5.10-125.el6]
```

```
Server          Comment  
-----  
CENTSMB        Samba Server Version 3.5.10-  
125.el6  
RAJA-DNS  
HOSSEIN  
  
Workgroup      Master  
-----  
WORKGROUP     RAJA-DNS  
[root@centsmb samba]#
```

Execution on Windows:

```
C:\Documents and Settings\shr>net use \\centsmb\ipc$  
/delete
```

\\centsmb\ipc\$ was deleted successfully.

C:\Documents and Settings\shr>

#####public read

```
[root@centsmb samba]# vim smb.conf
```

```
[public read]
comment = Public Read Stuff
path = /publicread
public = yes
readonly = yes
```

```
[root@centsmb samba]# mkdir /publicread
```

```
[root@centsmb samba]# chown -R nobody /publicread/
```

```
[root@centsmb samba]# echo "hi this is test" >
/publicread/test
```

```
[root@centsmb samba]# service smb restart
```

```
Shutting down SMB services:          [ OK ]
```

```
Starting SMB services:              [ OK ]
```

راهنمای کاربردی مدرک بین‌المللی (Samba3x) Linux LPIC-3 302 جلد ۲ 90

#####public write

```
[root@centsmb samba]# vim smb.conf
```

```
[public write]
```

```
comment = Public write Stuff
```

```
path = /publicwrite
```

```
public = yes
```

```
writable = yes
```

```
[root@centsmb samba]# mkdir /publicwrite
```

```
[root@centsmb samba]# chown -R nobody /p
```

```
proc/ publicread/ publicwrite/
```

```
[root@centsmb samba]# chown -R nobody /publicwrite/
```

```
[root@centsmb samba]# service smb restart
```

```
Shutting down SMB services: [ OK ]
```

```
Starting SMB services: [ OK ]
```

private write:Mixed: share level and user level security

```
[private write]
```

```
comment = privwrite Stuff
```



```
path = /privwrite
public = no
writable = yes
create mask = 0765
valid users= root
```

```
[root@centsmb samba]# mkdir /privwrite
[root@centsmb samba]# chmod -R 777 /privwrite/
```

```
[root@centsmb Desktop]# smbpasswd -a hossein
New SMB password:
Retype new SMB password:
[root@centsmb Desktop]#
```

```
[root@centsmb samba]# !s
service smb restart
Shutting down SMB services:          [ OK ]
Starting SMB services:               [ OK ]
[root@centsmb samba]#
```

```
C:\Documents and Settings\shr>net use *  
\\CENTSMB\privwrite /user:hossein  
  
C:\Documents and Settings\shr>net use \\centsmb\ipc$  
/delete  
  
\\centsmb\ipc$ was deleted successfully.
```

```
C:\Documents and Settings\shr>
```

```
C:\Documents and Settings\shr>net use * \\centsmb\public  
/user:root  
  
Drive X: is now connected to \\centsmb\public.
```

The command completed successfully.

#####Hidden Share

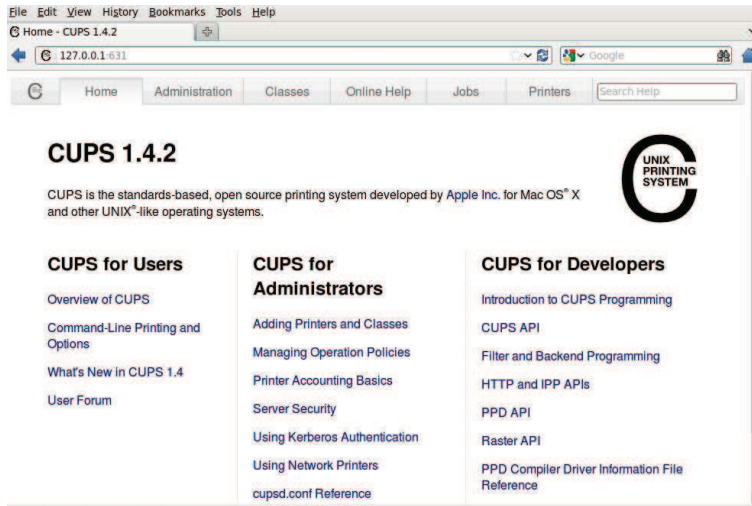
```
vim /etc/samba/smb.conf  
  
[hidden share]  
comment = privwrite Stuff  
path = /hiddenshare  
public = yes
```

```
writable = yes
browsable = no

[root@centsmb Desktop]# mkdir /hiddenshare
[root@centsmb Desktop]# vim /etc/samba/smb.conf
[root@centsmb Desktop]# chown -R nobody
/hiddenshare/
[root@centsmb Desktop]# vim /etc/samba/smb.conf
[root@centsmb Desktop]# !se
service smb restart
Shutting down SMB services:           [ OK ]
Starting SMB services:               [ OK ]
[root@centsmb Desktop]#
```

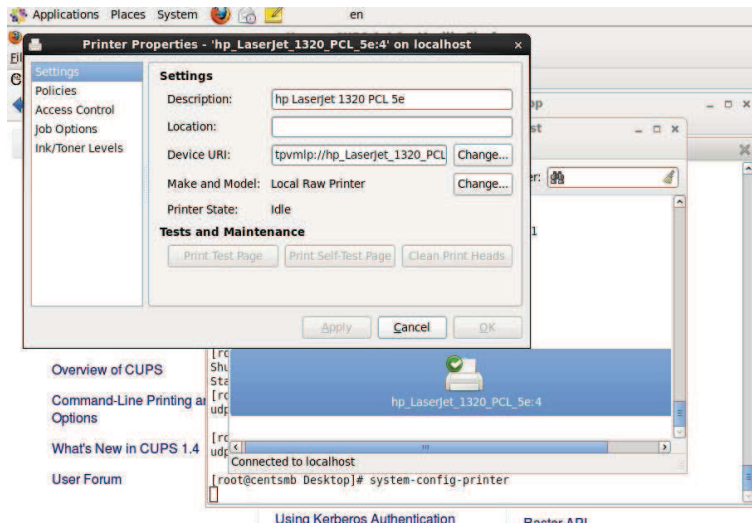
#####Print - share level security

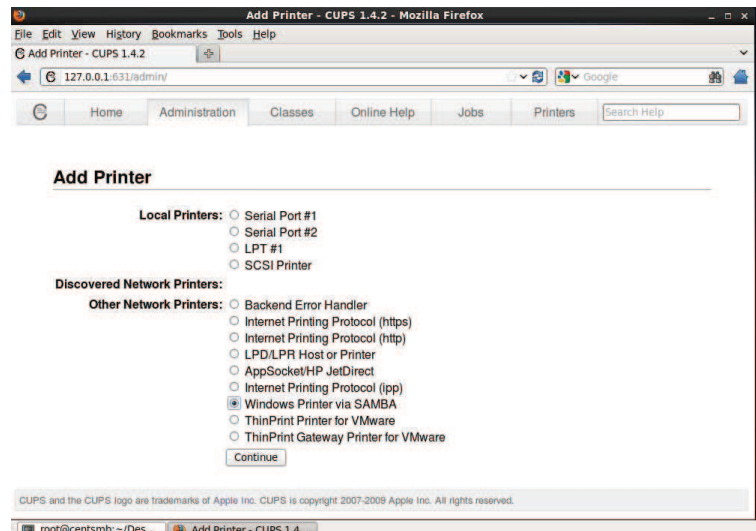
```
[root@centsmb Desktop]# netstat -nulp | grep :631
udp    0    0 0.0.0.0:631          0.0.0.0:*
2040/cupsd
[root@centsmb Desktop]#
```



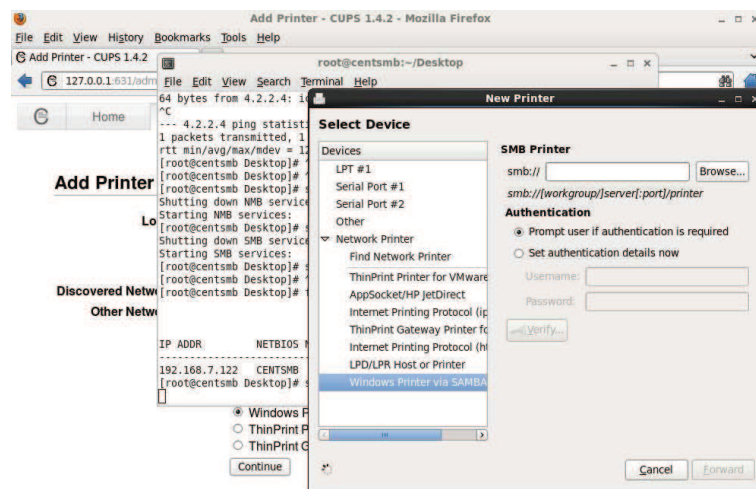
system-config-printer

firefox : localhost:631 --> manage printers and add printers





system-config-printer



Note: after adding printer run:

[root@centsmb Desktop]# service smb restart

```
Shutting down SMB services: [ OK ]
```

```
Starting SMB services: [ OK ]
```

```
[root@centsmb Desktop]#
```

```
[root@centsmb Desktop]# cat /etc/printcap
```

```
# This file was automatically generated by cupsd(8) from  
the
```

```
# /etc/cups/printers.conf file. All changes to this file
```

```
# will be lost.
```

```
hp_LaserJet_1320_PCL_5e:4|hp LaserJet 1320 PCL  
5e:rm=centsmb.raja.internal:rp=hp_LaserJet_1320_PCL_5  
e:4:
```

```
192.168.70.177\RAJA:39|\192.168.70.177\RAJA:rm=cen  
tsmb.raja.internal:rp=192.168.70.177\RAJA:39:
```

```
192.168.70.99\hp_LaserJet_1320_PCL_6:53|\192.168.70.  
99\hp LaserJet 1320 PCL  
6:rm=centsmb.raja.internal:rp=192.168.70.99\hp_LaserJet  
_1320_PCL_6:53:
```

```
Adobe_PDF:38|Adobe  
PDF:rm=centsmb.raja.internal:rp=Adobe_PDF:38:
```

```
Auto_Adobe_PDF_on_RAJA:37|Auto Adobe PDF on  
RAJA:rm=centsmb.raja.internal:rp=Auto_Adobe_PDF_on  
_RAJA:37:
```

.
. .
.

```
Snagit_9:46|Snagit
9:rm=centsmb.raja.internal:rp=Snagit_9:46:
```

```
[root@centsmb samba]# cat smb.conf | grep printcap
# Printcap Name let you specify an alternative printcap
file
;    printcap name = /etc/printcap
;    printcap name = lpstat
```

```
[root@centsmb samba]#
```

```
vim smb.conf
```

```
# ----- Printing Options -----
-----
```

```
#
```

```
# Load Printers let you load automatically the list of
printers rather than setting them up individually
```

```
# Cups Options let you pass the cups libs custom options,
setting it to raw
```

98 راهنمای کاربردی مدرک بین‌المللی (Samba3x) Linux LPIC-3 302 جلد ۲

```
# for example will let you use drivers on your Windows clients
```

```
#
```

```
# Printcap Name let you specify an alternative printcap file
```

```
#
```

```
# You can choose a non default printing system using the Printing option
```

```
load printers = yes
```

```
cups options = raw
```

```
; printcap name = /etc/printcap
```

```
#obtain list of printers automatically on SystemV
```

```
; printcap name = lpstat
```

```
; printing = cups
```

```
# -----
```

Note: use cups options = raw : for windows client printers and driver of them